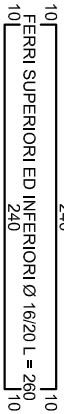
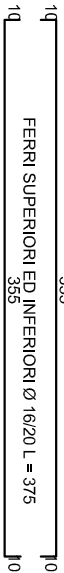


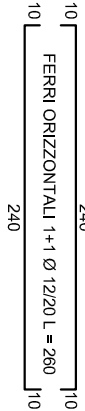
SEZIONE A-A



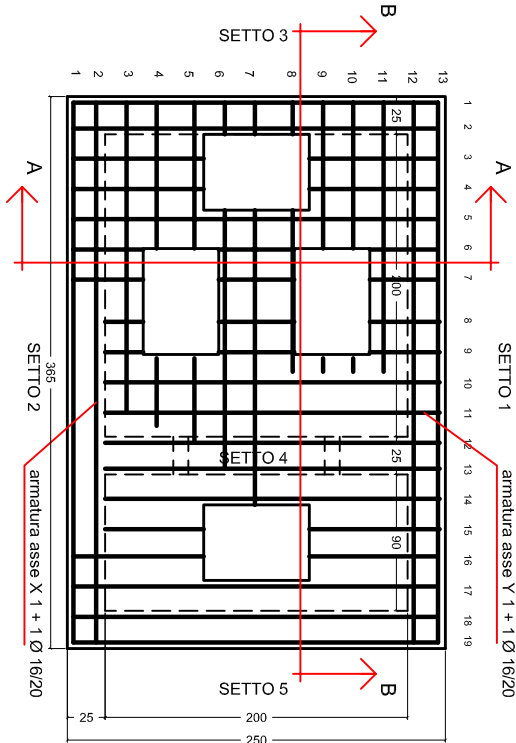
SEZIONE B-B



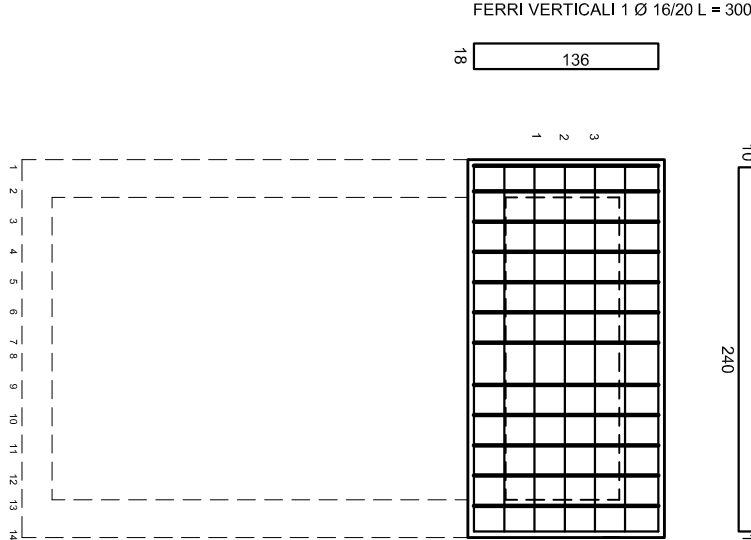
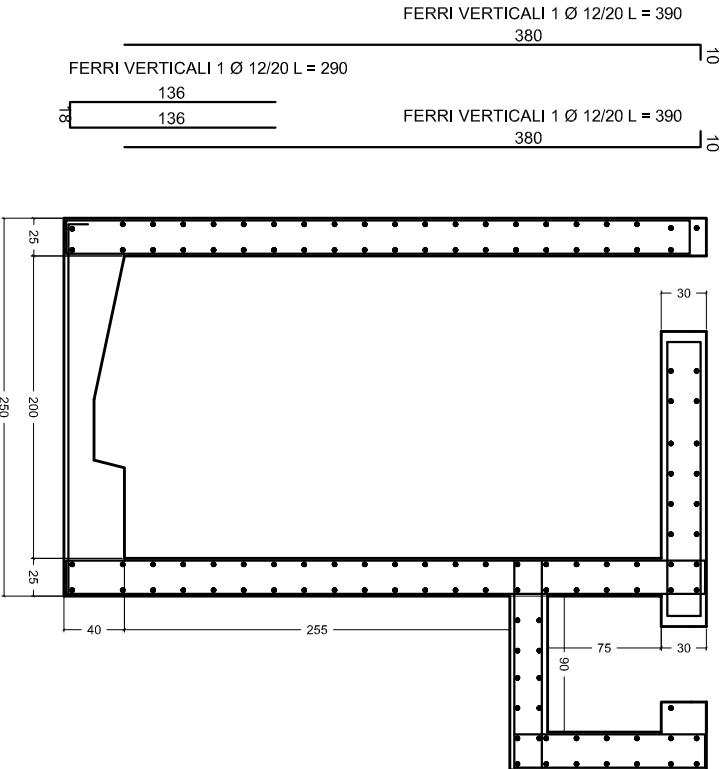
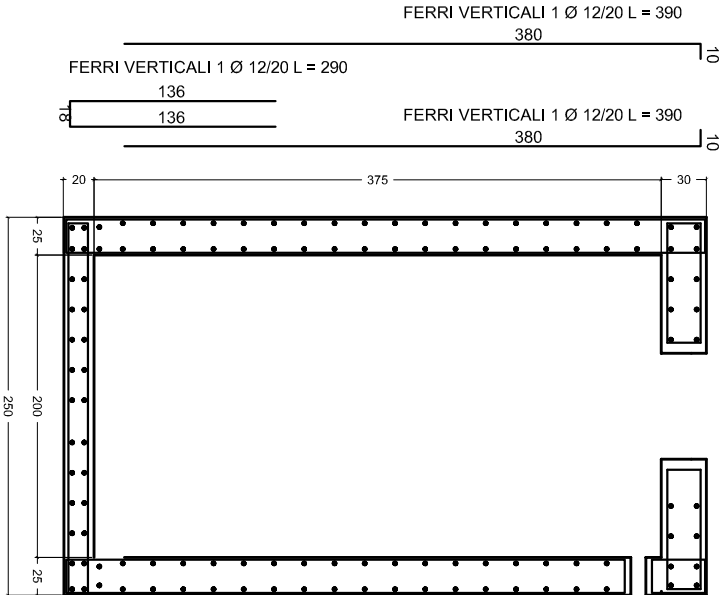
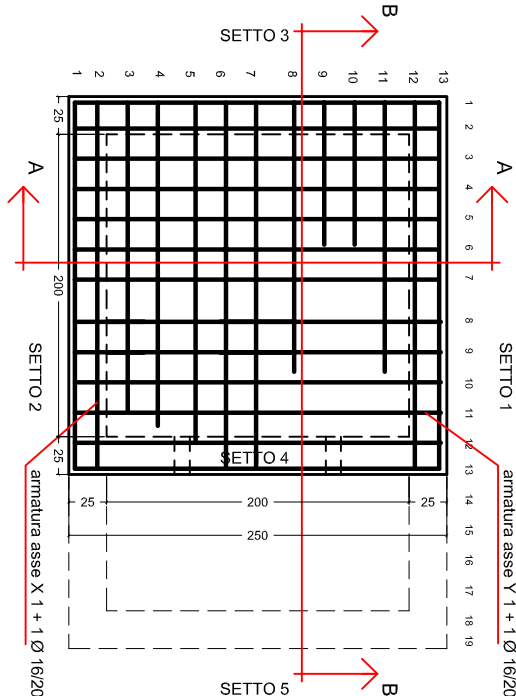
SETTO 5



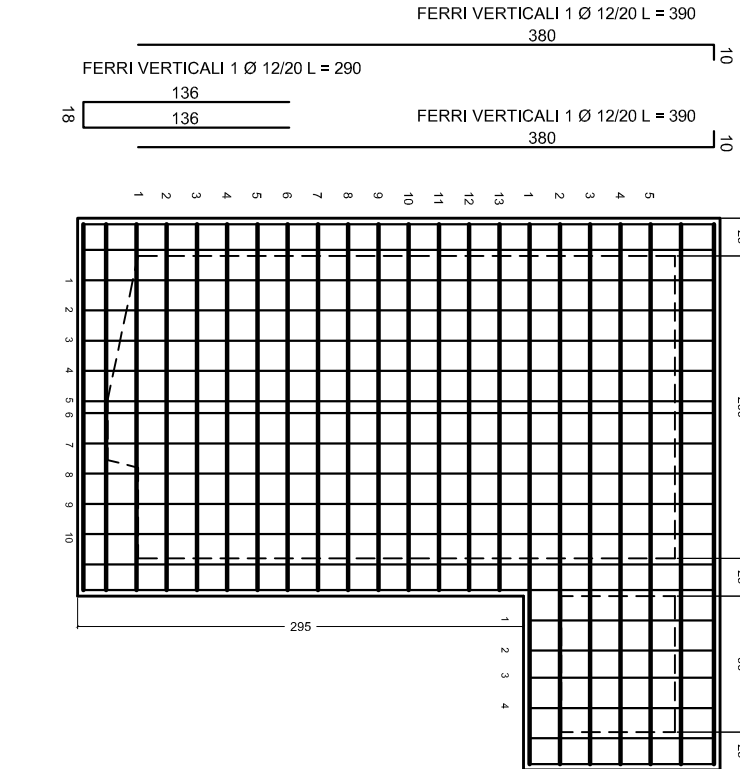
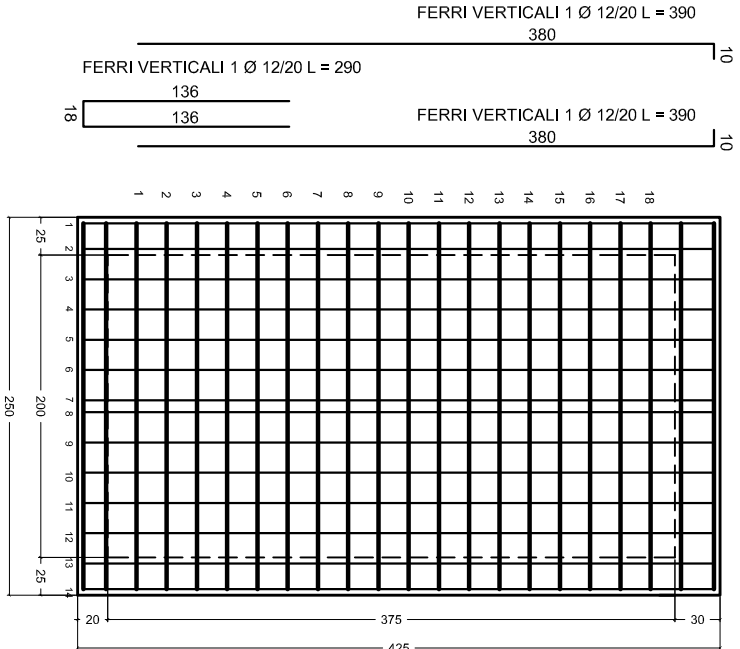
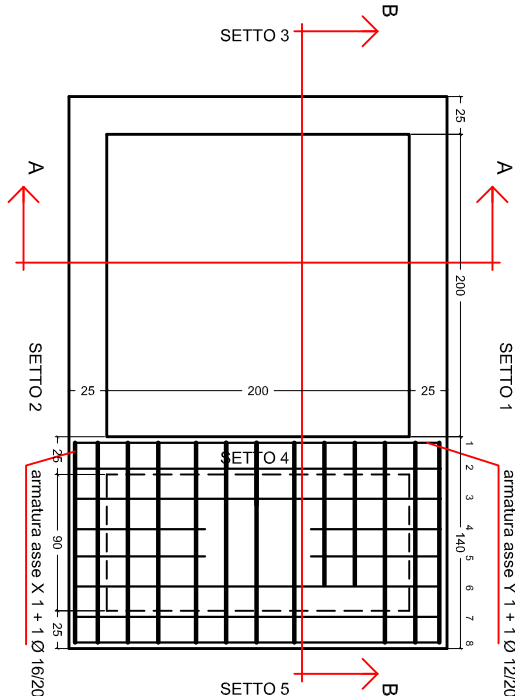
SOLETTA SUPERIORE



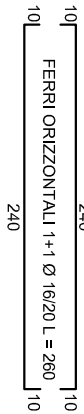
FONDAZIONE 1



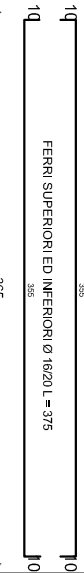
FONDAZIONE 2



SETTI 3 - 4



SETTI 1 - 2



CITTÀ DI  
CASALE MONFERRATO

SETTORE GESTIONE URBANA E TERRITORIALE  
UFFICIO LAVORI PUBBLICI

PROGETTO ESECUTIVO

E.A. 2012 - "OPERE DI URBANIZZAZIONE PEC  
DENOMINATO "AREA PRODUTTIVA"  
IN STRADA VECCHIA POZZO S. EVASIO -  
REALIZZAZIONE DI OPERE DI VIABILITÀ E SERVIZI A  
RETE ANNESSI"

R.U.P.:	Geom. Mario Tabucchi	Carpenteria ed armatura vasca pozzetto di sollevamento
Progettista:	Ing. Alessandro Ravazzolo	
Geom. Mario Tabucchi		

00		EDIZIONE INIZIALE	00	00	00
REV.	DATA	OGGETTO EDIZIONE	DS	VERIF.	RESUME
FILE :		TAVOLA N.:	REV:	SCALA 1 : 25	
		04C		00	--